

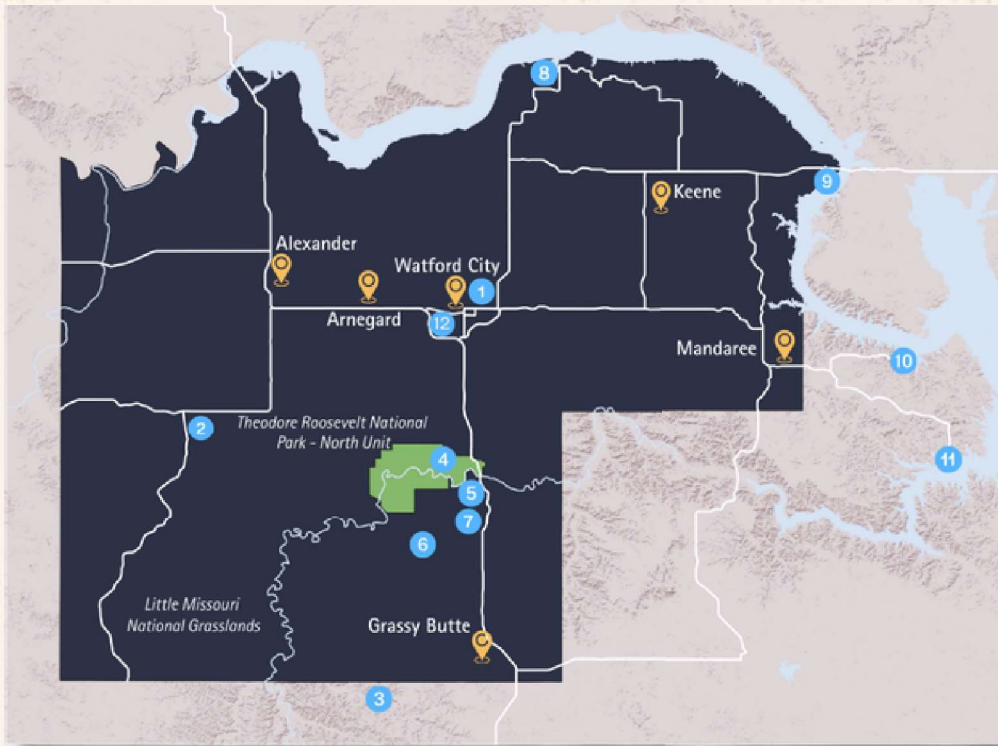
Badlands. Good Times.™

WATFORD

★ CITY ★

RV and Camping Guide





3 Magpie Campground

(701) 227-7800

From Watford City, head south on US-85 for 41 miles, then turn west onto Magpie Road for 15 miles and follow signage. Set in a remote stretch of the Badlands, Magpie Campground offers peaceful, rustic camping just a half-mile from the Maah Daah Hey Trail.

Amenities:

- Primitive RV and tent sites
- Unisex vault toilet
- Seasonal potable water
- Horses permitted

1 Watford City Tourist Park

1011 4th Ave NE, Watford City
watfordcityparks.com/Parks/Tourist-Park

Set alongside Cherry Creek in Watford City, the park offers 2 playgrounds, disc golf, horse shoe pits, picnic shelters, and a nearby walking path.

Amenities:

- 11 RV Sites with full hookups - water, sewer, and 20/30/50 amp power
- 5 Primitive Sites
- Restrooms and coin-operated showers
- Grills at select sites
- Nearby dump station



2 Sather Lake Campground

(701) 842-8500

From Watford City, head west on US-85 for 14 miles. Turn south onto ND-68 and continue for 17 miles, then turn south onto ND-16 and follow signs to the campground. Sather Lake Campground offers quiet, lakeside camping in a peaceful prairie setting.

Amenities:

- Primitive RV and tent sites
- Unisex vault toilet
- Fishing pier

4 Juniper Campground

Reserve on recreation.gov

Located within Theodore Roosevelt National Park. Head south 15 miles from Watford City on US-85 to the Park entrance. Juniper Campground is located 5 miles from the park entrance and is the only campground in the North Unit of Theodore Roosevelt National Park.

Amenities:

- Primitive RV and tent sites
- Accessible Vault Toilets
- Seasonal flush toilets & potable water
- Seasonal dump station



5 CCC Campground

Reserve on recreation.gov

From Watford City head South on US-85 for 15 miles, turn West onto Long X Road and follow for one mile into the campground. Nestled in the heart of the North Dakota Badlands, CCC Campground offers direct access to the iconic Maah Daah Hey Trail and sits along the scenic banks of the Little Missouri River.

Amenities:

- RV sites with 20/30/50 amp power
- Primitive Sites
- Accessible vault toilets
- Potable water (seasonal)
- Equestrian facilities (corrals, hitchrails, etc.)



6 Bennett Campground

13054 6th St NW #9312, Grassy Butte, ND
(701) 842-8500

Located in a quiet corner of the Badlands, Bennett Campground is ideal for hikers, bikers, and riders looking to explore the rugged beauty of western North Dakota.

Amenities:

- Primitive RV and tent sites
- Unisex vault toilet (summer only)
- Seasonal potable water (hand pump well)
- Trail access just west of the campground

7 Summit Campground

(701) 842-8500

From Watford City, head south for about 19 miles on US-85, then turn west onto Summit Road and look for an entrance marked by a brown-and-white National Grasslands picnic area signs. Tucked into the Dakota Prairie Grasslands, Summit Campground offers a peaceful, primitive camping spot with direct access to nearby trails.

Amenities:

- Primitive RV and tent sites
- Unisex vault toilet
- Easy access to the 2-mile Summit Trail and the ¼-mile Overlook Trail

8 Tobacco Gardens Resort & Marina

4781 ND-1806, Watford City
Reserve on tobaccogardens.com

25-miles north, of Watford City, Tobacco Gardens Resort & Marina is nestled on the south shore of Lake Sakakawea. With over 100 campsites, modern amenities, and year-round access, it's the perfect spot to enjoy the outdoors of North Dakota.

Amenities:

- RV electric and non-electric sites
- RV Dump Station
- Fresh water
- Bathrooms and showers
- Boat ramp
- Two playgrounds



9 4 Bears RV Park

Reserve at 800-294-5454, ext 7617
4bearscasino.com/lodge/rv-park/

Located south of 4 Bears Casino in New Town, 4 Bears RV Park has stunning views of Lake Sakakawea and offers a variety of camping options and amenities for a comfortable stay.

Amenities:

- 84 RV sites with full hookups
- Primitive sites
- Restrooms and showers
- Swimming beach



10 Skunk Bay Resort

Reserve on theroosterskunkbay.com

Located 45 miles east of Watford City in the rolling hills and valleys of the Fort Berthold Indian Reservation, Skunk Bay Resort is a full-service lakeside retreat.

Amenities:

- RV Sites with 30/50 amp power
- Bar & Grill
- 2 Boat Ramps
- Horsetrailer parking and corral rentals



11 McKenzie Bay Marina & Recreation Area

8 Marina Rd, Mandaree, ND
mckenziebay.org

Situated 53 miles east of Watford City along the banks of Lake Sakakawea, McKenzie Bay Marina & Recreation Area combines convenient services with lakeside recreation.

Amenities:

- RV electric and water sites, dump station
- Primitive sites
- Bathrooms and showers
- Boat ramps
- C-Store

12 Hosting an RV Event?

(701) 842-EXPO

The McKenzie County Ag Expo in Watford City is the perfect destination for your next gathering. This state-of-the-art facility offers everything you need to host a memorable event, from expansive indoor and outdoor spaces to convenient RV accommodations.

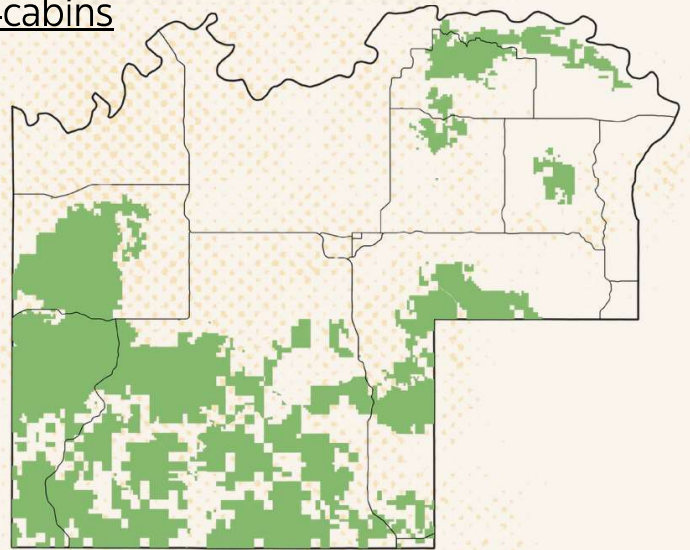
Amenities:

- 103 RV Spots
- 30/50 amp power
- 3 water fill-up locations
- Bathrooms and Showers



Backcountry Camping

McKenzie County contains over 500,000 acres of the Little Missouri National Grasslands. For more rules and guidelines for dispersed camping go to www.fs.usda.gov/r01/dpg/recreation/camping-cabins



Little Missouri National Grasslands in McKenzie County